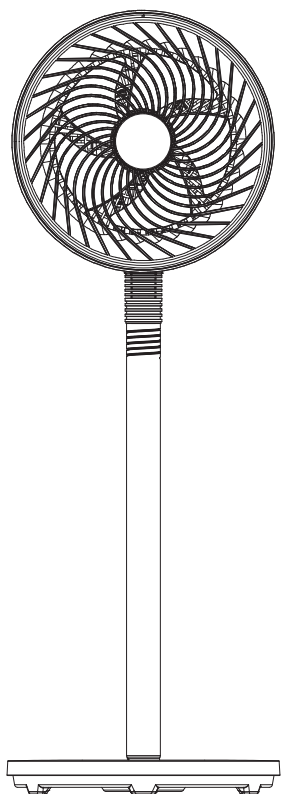


PELONIS

User Manual

7-Inch Air Circulator Fan
MODEL: PFG18L4AGWUK



SAVE THESE INSTRUCTIONS

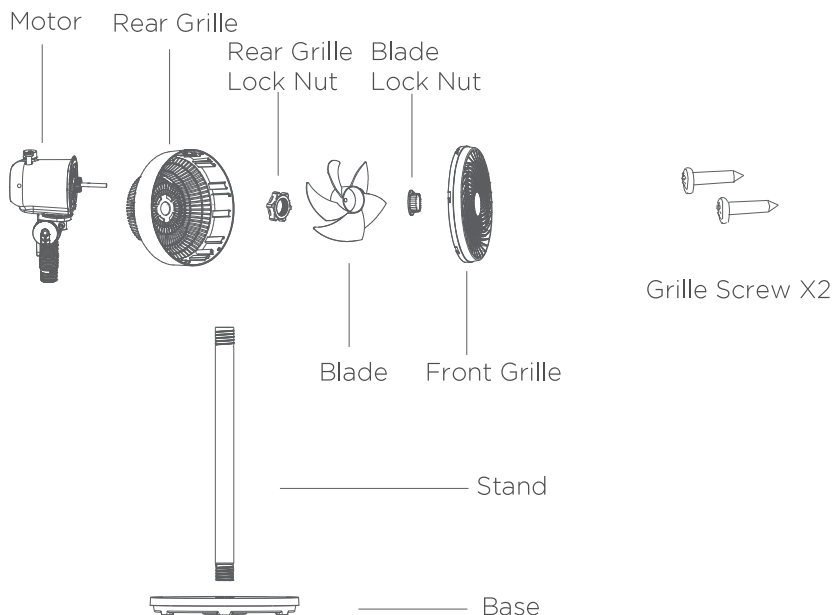
Caution

- Read Rules for Safe Operation and Instructions Carefully.
- This appliance can be used by children aged from 8 years and above and persons with reduced physical, sensory or mental capabilities or lack of experience and knowledge if they have been given supervision or instruction concerning use of the appliance in a safe way and understand the hazards involved. Children shall not play with the appliance. Cleaning and user maintenance shall not be made by children without supervision.
- Keep electrical appliances out of reach from children or infirm persons. Do not let them use the appliances without supervision.
- Never insert fingers, pencils, or any other object through the grille when fan is running.
- Disconnect fan when moving from one location to another.
- Be sure fan is on a stable surface when operating to avoid overturning.
- DO NOT use fan in window, rain may create electrical hazard.
- Indoor use only.

⚠ Warning

- If the supply cord is damaged, it must be replaced by manufacturer or its service agent or a similarly qualified person in order to avoid a hazard.
- To protect against the risk of electrical shock, do not immerse the unit, cord or plug in water or other liquid.
- When the appliance is not in use and before cleaning, unplug the appliance from the outlet.
- Indoor and household use only.
- When the fan was assembled, the rotor blade guard shall not be taken off anymore.
 - Prior cleaning unplug the fan.
 - The rotor guard shall not be disassembled/opened to clean the rotor blades.
 - Wipe the fan enclosure and rotor blade guard with a slightly damp cloth.

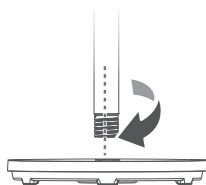
PARTS AND FEATURES



INSTALLATION INSTRUCTIONS

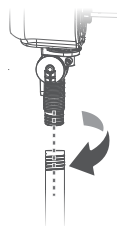
1 Base and Stand Connection

Align the interface between the stand and the base, and then rotate clockwise to tighten it.



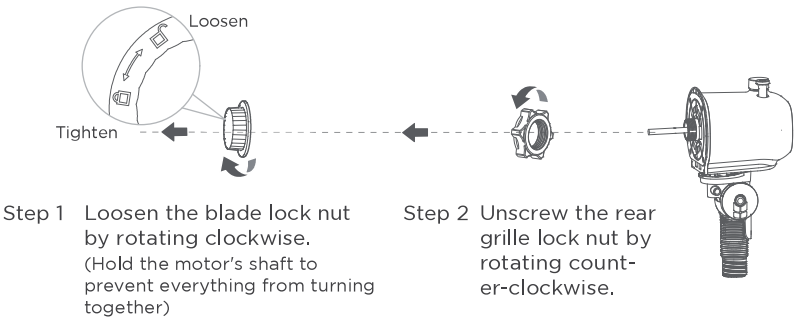
2 Stand and Motor Connection

Insert the connector under the stand interface, and then rotate clockwise to tighten it.



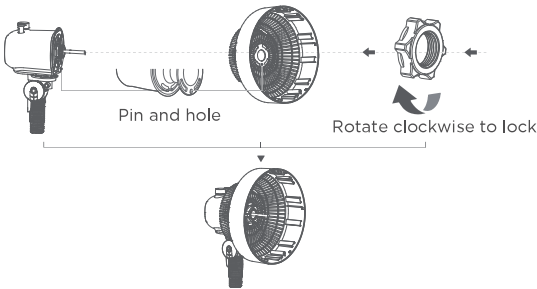
3 Rear Grille and Motor Connection

3.1 First, remove the blade lock nut and rear grille lock nut from the motor assembly.



3.2 Place the rear grille against the motor housing and align the motor housing's pin and reargrille's hole.

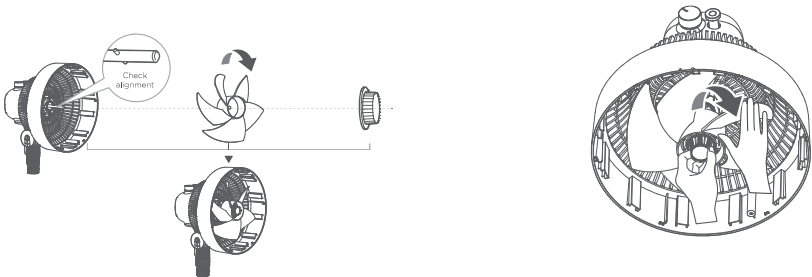
3.3 Lock the rear grille by rotating the rear grille lock nut clockwise.



4 Blade Attachment

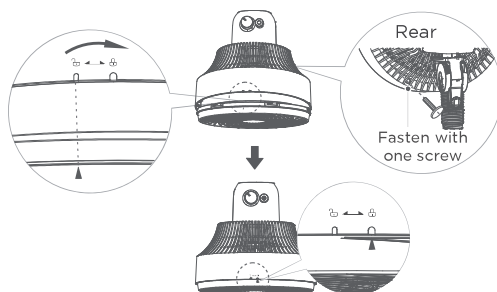
4.1 Place the blade through the motor's shaft while aligning the shaft's pegs with the blade's slots.

4.2 While holding the blade, screw the blade lock nut on by rotating it counter-clockwise.



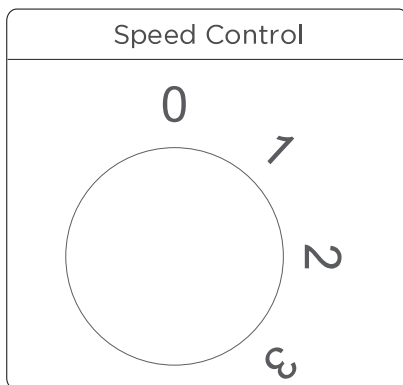
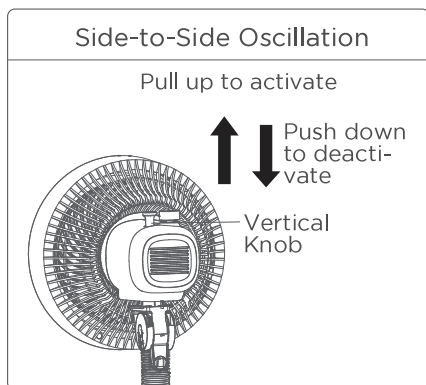
5 Front Grille Attachment

Align the front grille's arrow with the rear grille's  and snap the front grille in place with both hands. Then rotate the front grille's arrow to the rear grille's , and fasten the screw.



Note: Two screws come in the package but only one is needed.

OPERATING INSTRUCTIONS



CLEANING AND MAINTENANCE

Precautions

- Be sure to unplug from the power supply before cleaning.
- Do not rinse the body directly with water.
- Never clean the product with any abrasive tools or solvents that will damage the surface; use a damp cloth to clean, and wipe promptly with a dry cloth.
- It is forbidden to disassemble the product for modification. Regular inspection and cleaning of the product is recommended in order to extend its service life.

DISPOSAL AND RECYCLING



This product complies with EU WEEE Directive and bears a classification symbol for waste electrical and electronic equipment (WEEE).

This marking indicates that this product should not be disposal with other household wastes throughout the EU. To prevent possible harm to the environment or human health from uncontrolled waste disposal, recycle it responsibly to promote the sustainable reuse of material resources. To return your used device, please use the return and collection systems or contact the dealer where the product was purchased. They can take this product for environmental safe recycling.

SPECIFICATIONS

Model	PFG18L4AGWUK
Rated voltage	220-240V-, 50Hz
Rated power	33W
Noise	≤56dB

SERVICE AND SUPPORT

In the event of a warranty claim or if service is required for this product, please contact us at the following:

E-mail: cs_eu@pelonis.com



Table 3: Information requirements for comfort fans.			P
Information to identify the model(s) to which the information relates to [fill in as necessary]:			
Description	Symbol	Value	Unit
Maximum fan flow rate	F	15,55	m ³ /min
Fan power input	P	33,12	W
Service value	S _V	0,47	(m ³ /min)/W
Standby power consumption	P _{SB}	---	W
Off power consumption	P _{OFF}	0	W
Fan sound power level	L _{WA}	52,51	dB(A)
Maximum air velocity	C	4,55	meters/sec
Seasonal electricity consumption	Q	10,60	kWh/a
Measurement standard for service value	EN IEC 60879:2019		
Contact details for obtaining more information	Lifestyle Orchestra Co. Pte. Ltd. 158 CECIL STREET#07-01/02 SINGAPORE (069545)		

EC	REP
----	-----

Company: KD EUROPE

Address: Stara Debszczyzna 4,16-424,Filipow,PL

Mail: Kdeurope.office@gmail.com

PELONIS